

Weekly Bargain Bulletin

WBB

March 27, 2020
Edition 2501
www.WeeklyBargainBulletin.com



Randy Glasbergen www.glasbergen.com GLASBERGEN
"I just received a text message in my alphabet cereal."

We are the area's **#1 COMPANY** for sales and installation of roofing, siding, windows and gutters!

But don't take our word for it!
"If you need a new roof I recommend Shell Restoration. Very professional, easy to work with, and best of all, do great work. Very pleased with my roof." Justin Sheldone



Shell RESTORATION
Roofing, Siding, Windows, Gutters & More

Free Estimates
Financing Available
Low Payments, 0% Interest
Fully Insured • PA105988

800 663-8103
PO Box 325, Grove City
www.ShellRestoration.com

PREFERRED CONTRACTOR
OWENS CORNING

Mike Perrotta
CONTRACTOR LLC



- Concrete Work
- Masonry Work
- Roofs (Residential and Commercial)
- Additions and Remodeling
- Siding and Windows

724 658-4315
Cell 724 971-3870
PA023643

E-Z Klean Car & Van Wash
3342 Wilmington Rd., New Castle, PA 16105
In Field Club Commons Plaza • OPEN 24 / 7

*** SPRING SPECIAL ***
Car Wash Gift Certificates
Goodbye Winter Salt!



Buy 5 Washes, Get 2 FREE!
Call 724 651-4066
Valid 3/27-4/23, 2020

724 652-7884
Office, leave mess.

724 730-3444
Cell, immed. response

CRIT-R-DONE®
NUISANCE WILDLIFE & PREDATOR CONTROL
767 High Hill Rd., Pulaski, PA 16143



Raccoons In Your Chimney?

Call Us Today!
We will remove those pesky critters from places you don't want them!
Commercial & Residential Animal Removal

Squirrels Driving You Nuts?

Catnapper LIFT CHAIRS
Starting At \$599
Allhouse
Appliances and More
Find Our Ad On Page 16

CADE PAVING
724 652-6144
PA006516

Locally Owned and Operated Since 1993

Asphalt Paving, Tar & Chip, Sealcoating, Excavation, Demolition, Asphalt Millings
Free Estimates • Fully Insured
Senior and Military Discounts

- Grass Cutting • Landscaping
- Mulching • Spring/Fall Clean Up
- Bed Re-defining
- Gutter Cleaning
- Shrub Trimming
- Tree Cleanups



Branden Barnes
Owner
Free Estimates
724 201-5208
PA129858

HOME IMPROVEMENT

- Roofing • Siding
- Soffit and Fascia
- Gutters and Decks
- Exterior Painting
- Metal Roofs
- Weather Damage and Repair

Dan McLaren
References, Free Estimates;
724 667-6201 or 724 730-0320

PA019211

\$\$\$\$\$\$\$\$\$\$\$\$\$\$\$\$

FOXWOOD AUTO SALVAGE
Buying Junk Cars and Trucks
Call Us Last for Best Price!

- Highest Prices - Paid In Cash!
- Selling Used Parts and Tires
- Quality Parts - Low Prices

24 Hours **724 774-3386**



UNI Home Solutions
We Buy Houses
Call Dave "The We Buy Guy"

724 654-5656
webuyhousesnewcastle.com

GAS LIGHT
Manufactured Home Sales
724 658-1000 PA002456
Rte. 108, 1 mile East of New Castle

Retailer of Commodore Homes

- Homes
- Parts
- Service
- Propane

NEW!!!!
2020 Commodore
Astro, 16'x76', 3 bedrooms, 2 baths, includes delivery and set, skirting steps, air cond., easy financing
\$58,900

PROPANE 20 Pound Tank \$13
No Coupon Necessary • Offer Expires 4-30-20

Check out our online edition at our website
WeeklyBargain Bulletin.com
and on Facebook



Highest Prices Paid for Junk Vehicles
Free Quotes
Call or Text
724 813-5480

DAN'S AUTO BODY & REPAIR
130 W. Long Ave., New Castle
724 657-3647
Owner: Daniel McClure

PA State Inspections

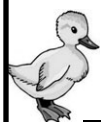
- Minor to major accidents
- Insurance estimates
- Brakes
- Exhaust
- Overall paint jobs
- Rust repair
- Tune-ups
- Oil Changes

Will waive deductible, Competitive prices
www.DansAutoBodyRepair.com

ON THE SPOT
10% OFF with this coupon
RESIDENTIAL • COMMERCIAL CLEANING

POWER WASHING

ROOF CLEANING
Houses • Decks • Gutters
Patios • Fences • Sidewalks
RV's • Boats • Semi Trucks
Free Estimates • **724 944-0074**
PA142175 • New Castle

MIJAVEC FEED & SUPPLY**Professional Grow Mix**3.8 cu. ft. bale **\$18.99****Container Mix: 2 cu. ft. \$10.99****NOW TAKING ORDERS for Chicks, Ducks, Turkeys, and Game Birds****• Onion Sets**

• Wood Pellets • Wild Bird Feed

Mon.-Fri. 8:30-5:30; Sat. 8:30-4; Sun. 10-2

724 964-8933

Route 422, 1.5 miles East of PA/Ohio line

Call Now for Spring Savings!**Pole Buildings and Garages****KNEPP BUILDINGS, INC.****814 382-0392** • www.kneppbuildings.com**MAHONING AUTO BODY**

14 East Madison Ave., New Castle, PA 16102

Complete Collision Repair

We can help with insurance deductibles

724 856-8393**Free Estimates**

Monday-Friday, 9am-5pm

Under New Ownership

Michael Lenn, Owner

**NORM'S ROOFING**

Specializing in

- Metal Roofs • Siding
- Decks • Garages

Free Estimates • PA153455**814 282-1264****Murphy Concrete**

- Driveways
- Sidewalks
- Patios • Floor
- Pool Decks, etc.

• Exposed Aggregate

• Lampas and E.P. Henry Retaining Wall Systems

Free Estimates • Fully Insured • PA031414

724 654-2460

Start Your Own Herd! Black Angus Cows, bred cows, cow/calf pairs, 1st calf heifers, 50 calves available; Taylor Farms 412 298-2076

Please be safe and follow current government recommendations.

Hay for Sale

1st Cut ... \$3.00

2nd Cut... \$3.50

Square Mixed Bales

724 964-8386

APRIL SALES POSTPONED

We have postponed all of our April sales.

Please visit our website

www.cresswellauction.com

for updates.

Thank you for your patience.

Don

Cresswell Auction Service

A Full-Time, Full-Service Auction Company

724 253-3493

www.cresswellauction.com

Stay Informed - Take steps to protect others from the Coronavirus

• Stay home if you are sick, except to get medical care.

• Cover your mouth and nose with a tissue when you cough or sneeze or use the inside of your elbow.

• Throw used tissues in the trash.

• Immediately wash your hands with soap and water for at least 20 seconds. If soap and water are not readily available, clean your hands with a hand sanitizer that contains at least 60% alcohol.

• If you are sick: You should wear a facemask when you are around other people (e.g., sharing a room or vehicle) and before you enter a healthcare provider's office. If you are not able to wear a facemask (for example, because it causes trouble breathing), then you should do your best to cover your coughs and sneezes, and people who are caring for you should wear a facemask if they enter your room.

If you are NOT sick: You do not need to wear a facemask unless you are caring for someone who is sick (and they are not able to wear a facemask). Facemasks may be in short supply and they should be saved for caregivers.

• Clean AND disinfect frequently touched surfaces daily. This includes tables, doorknobs, light switches, countertops, handles, desks, phones, keyboards, toilets, faucets, and sinks.

• If surfaces are dirty, clean them: Use detergent or soap and water prior to disinfection.

To Disinfect: Most common EPA-registered household disinfectants will work. Use disinfectants appropriate for the surface. Options include:

• Diluting your household bleach. To make a bleach solution, mix: 5 tablespoons (1/3 cup) bleach per gallon of water OR 4 teaspoons bleach per quart of water

• Follow manufacturer's instructions for application and proper ventilation. Check to ensure the product is not past its expiration date. Never mix household bleach with ammonia or any other cleanser. Unexpired household bleach will be effective against coronaviruses when properly diluted.

• Alcohol solutions: Ensure solution has at least 70% alcohol.

• Other common EPA-registered household disinfectants: Products with EPA-approved emerging viral pathogens claims are expected to be effective against COVID-19 based on data for harder to kill viruses. Follow the manufacturer's instructions for all cleaning and disinfection products (e.g., concentration, application method and contact time, etc.).

For more info visit: www.coronavirus.gov**BANKS' TREE SERVICES, LLC**
TREE REMOVAL AND LANDSCAPING

- Tree & Shrub Trimming, Removal, Replanting
- Stump Grinding
- Landscape Design
- Edging & Mulching

724 312-5492

24 Hr. Emergency Service

Free Estimates

Fully Insured • PA145526

**Covered Bridge Storage Sheds**

- Mini Barns • Storage Sheds
- Playhouses • Dog Houses

All wood construction, choice of colors, completely assembled and painted, delivered to your site, ready to use, will build what you want.

Levi J. Byler, 631 Covered Bridge Rd., Volant, PA 16156. From light at Rte. 158 in New Wilmington, go East on Rte. 208 about 2.5 miles, turn right onto Covered Bridge Rd., 1/2 mile on right

FRIENDS OF

NRA

one team
one voice
one vision

Lawrence County 2020

ANNUAL FUNDRAISER ON BEHALF OF THE NRA FOUNDATION

RESCHEDULED

Friday, June 26, 2020

@ The New Englander

Weekly Bargain Bulletin 2020**EGGstravaganza**

will be **RESCHEDULED**
at a later date. Watch our
paper, website and facebook
page for updates.

**POSTPONED****P&J PAINTING****& PRESSURE WASHING**

Interior • Exterior • Free Estimates

WE BLAST AWAY ALL OF YOUR DIRT AND GRIME, WITH OUR EXPERT POWER WASHING EQUIPMENT!**John**

PA151491

724 730-3479**Custom Millwork****Remodeling Supplies**

Doors
Ceiling Tile
Schlage Door Knobs
Plywoods

RELIABLE LUMBER

502 Sampson St., New Castle • 724 658-5533
Monday - Friday 7:30am-4:30pm, Saturday 8-noon

Thomas Byler & Sons Roofing Contractors, LLC

707 Carlton Rd., PA006045
Carlton, PA 16311

Call or Text John 724 699-6858

3rd Generation Craftsmen Old World Craftsmanship New World Innovations

- New Roofs • Re-Roofs
- Lifetime Shingles and 40 Year Metal

Credit Cards Accepted
Owens Corning Certified Preferred Contractor

Maria B. Mezzanotte, DDS, LLC



- Accepting New Patients
- Most Insurances Accepted

724 658-5883
3409 Wilmington Rd., New Castle, PA 16105

AIR TOOL REPAIR

PLUS Nails, Deck Screws,
Construction Screws and More

Check Our Prices

2 3/8"x113 Ring Shank Nail, 5M \$52.50
3"x131 Smooth, 2.5M.....\$29.00

LONELY LANE STOVES

808 Lonely Ln., Volant, PA 16156
Between New Wilmington & Volant on Rte. 208

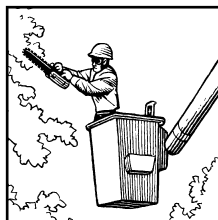
Butler Investment Club Now Forming (40% roi)

For detailed info call 412-860-9888
or cawoffice@excite.com

Reiber Tree Service

- Stump Removal • Bucket Truck Service
- Lots Cleared • All Tree & Shrub Work
- Tree & Shrub Planting & Feeding
- Storm Damage Cleanup,
Complete 24 Hour Emergency Service
- Free Estimates
- Fully Insured
- 45 Years Experience

Call Dave or Ken
724 533-2343
or 724 615-1402
PA085660



All-Pro ROLL-OFF SERVICES, INC.

Same Day Service Available!

10 Yard • 13 Yard • 15 Yard
20 Yard • 30 Yard

www.AllProRolloff.com • Senior Discount
Volant, PA • 724 674-1619

BIBLE WORD SEARCH

by Elie's Spiritual Treasures

JOHN 1:14

The Word became flesh and made his dwelling among us. We have seen his glory, the glory of the one and only Son, who came from the Father, full of grace and truth.

NEW INTERNATIONAL VERSION

E J P G I G R A C E
Q A F L E S H T E Q
X G N I L L E W D T
Y P C A M O N G R S
R S E E N L O U I P
O G S W V E T H O Q
L J O C N H D N U L
G R A W T O L A E L
D M P A J Y S N M U
E R E H T A F U K F

Find the bolded/underlined words in the diagram.
They run in all directions — forward, backward, up,
down and diagonally.

WWW.SEARCHING-FOR-JESUS.COM

©2020 King Features Synd., Inc.



"When my wife told me that my birthday
gift was something I could use outdoors,
I thought she meant a _____."

SCRAMBLERS

Unscramble the letters within each rectangle to form four ordinary words. Then
rearrange the boxed letters to form the mystery word, which will complete the gag!

Blanket
RELAY
Outrage
RANGE
Irritation
AGRINCH
Clarion
BULGE

TODAY'S WORD

Electric MOTOR REPAIR and SALES

724 301-0692

1544 State Rte. 956,
Volant, PA 16156

KNIGHTS OF
THE ROUND
TABLE

MAGIC MAZE

E V S Q N K I F D A G X G G V
T Q O M T O L E M A C J E A H
F C A K I N G A R T H U R L Y
W U R P L L N E N O L J A A H
F D B Z E A T Y R L A V I H C
X V T G T H M R Q E I O N A M
K I E S H F D O B C V Z T D Y
W N I A W A G V R N T I Y R Q
D R O N S I R E H A G A D L K
T I H F D C P O A L K Z X E W
V U S R Q O N M T K J I H F B

Find the listed words in the diagram. They run in all
directions forward, backward, up, down and diagonally
Unlisted clue hint: King Arthur's Castle and Court

Bedivere	Gareth	King Arthur	Percival
Chivalry	Gawain	Lamorak	Tor
Gaheris	Geraint	Lancelot	Tristan
Galahad	Kay	Legend	

©2020 King Features Syndicate, Inc. All rights reserved.



We Are
OPEN!

Elderly? Health Issues?
Self-Quarantined?
Delivery Options Available!

- Earthborn
- Fromm
- Fussie Cat
- Tiki Dog
- Dave's
- NutriSource
- Zignature
- Sojos
- Tiki Cat
- Nature's Logic



**Foods & Treats
for Dogs & Cats!**



4466 Mitchell Rd., Suite 1, New Castle
724 652-0655 • Mon.-Fri. 10-7; Sat. 9-3

Ren-Pro, LLC

Two Services...
One Trusted Name!

Professional Renovations

• Roofing • Windows
• Siding

724 658-8045

Hauling

• Shingles • Trash
• Clean Up • Stone
You Load... I'll Drive.
724 730-3503

Jack Mentzer
PA026401

TERRIE'S CAR SALES & RENTALS 724 652-1540

- 1998 Mercedes
Benz SL500, 95K,
hardtop conv. \$7,650
- 2007 Dodge Ram
1500, 4WD....\$7,995
- 2005 Lexus
.....\$6,995

Ask about
GUARANTEED
Credit Approved

WE RENT: Cars,
Vans, & U-Hauls
• Title Service •
• Propane Sales •
Rte. 18 & Rte. 158
At the Y

Mon.-Fri. 9-5; Sat. 9-2;
other times by appoint.

WE BUY Cars & Trucks

Hahn's Sales and Service



TIMBERWOLF™

HONDA Generators

211 Sankey Run Rd.
Edinburg, PA
724 652-5164



Sales, Parts, Service • Chain Sharpening

COYOTE HEATING and AIR CONDITIONING



Beat the Rush!

Call Now for
Air Conditioning
Tune-Ups/Service

- 25+ Years
Experience
- Fast, Reliable
Service 24/7
- Call for
Free Estimates

Insured • PA151140 **724 487-0704**

MITCHELTREE BROS. LOGGING & LUMBER, INC.

**Buyers of Standing Timber,
Timber Land, Saw Logs
and Hardwood Lumber**

Selling Hardwood Pellets
Call for Pricing
Delivery Available

724 598-7885

ACDelco

Service and Parts Center

State Inspection

PA State Inspection
\$19.95

SAVE \$12.00
 (Plus sticker)
 Reg. \$32.00
 Exp. Apr. 30, 2020

G.O. CRIVELLI AUTOMOTIVE
 CERTIFIED PRE-OWNED

Oil Change

PLUS FREE
 4-Tire Rotation

From Just
\$25.95

Most cars. Includes up to 5 qts. of synthetic blend oil, filter and lube where necessary. (Plus tax & shop supplies)
 A \$44.95 value.
 Exp. Apr. 30, 2020

G.O. CRIVELLI AUTOMOTIVE
 CERTIFIED PRE-OWNED

COOPER TIRES

Rhino Linings

Rte. 18,
 New Castle
724 654-7741
 gocrivelli.com

G.O. CRIVELLI AUTOMOTIVE
 CERTIFIED PRE-OWNED

Your New Car Alternative

"Real generosity is doing something nice for someone who will never find out."
 Frank A. Clark

Harbor Landscape Supply

2226 Ben Franklin Highway, Edinburg
 (Rte. 422, 5 miles West of New Castle)
 Mon.-Fri. 8-4
 Sat. 8-1
 724 658-6160

We will fill your
Propane 20 lb. Tank
\$13.00

no coupon necessary
 expires 4-30-20

Alex

Call us to schedule
724 652-3400
 alexrestoration.com

Restoration and Masonry Repairs

- Brick and Stone
- Tuckpointing
- Caulking
- Stainless Steel Liner

We Powerwash and Seal
 Decks, Driveways, and Sidewalks

• Over 35 Years Experience • Free Estimates • PA062502

Figurelli Lawn Care, LLC
 Residential & Commercial

- Lawn Service • Landscaping
- Shrub/Hedge Trimming
- Minor Excavating
- Snowplowing/De-icing
- Leaf Removal

Fully Insured • PA114956
 Call for an Estimate Today! **724 714-4436**

FLASH BACK

by Mick Harper

1. Name the album cover that shows old toys climbing out of a vintage toy box.
2. Which Donovan song mentions the Green Lantern?
3. Name the group that released "Freewill."
4. The Polka Tulk Blues Band ended up as what band?

Answers Below

• **STRAW** •
 Square Bales
 \$5.00 each
Boak Farm
 724 924-2396

• Evidently it's not just humans who associate a deeper voice with maturity (and desirability) in males. It seems that male owls try to appear more macho and attract females by lowering the tone of their hoots.

PCM
 PENTONY CAPITAL MANAGEMENT

HOWIE J. PENTONY
 Client Portfolio Manager
 We Manage Your Investments

105 Adams Lane • P.O. Box 359
 Portersville, PA 16051
 HJ@HowiePentony.com
 www.HowiePentony.com
 Toll-free (877) 826-3799 • Tel (724) 368-4224
 FAX (724) 368-4227

Securities and advisory services offered through Commonwealth Financial Network®, Member FINRA/SIPC, a Registered Investment Adviser.

FLASHBACK ANSWERS

1. "Toys in the Attic," by Aerosmith, in 1975. One single from the album was "Walk This Way."
2. "Sunshine Superman," in 1966.
3. Rush, on their "Permanent Waves" album in 1980. ©2020 King Features
4. Black Sabbath.

WeatherTech® • Floor Liners • No Drill Mud Flaps

From: **HENLEY'S**
 TRUCK ACCESSORY STORE
 est. 1968

A.R.E. Truck Caps & Lids • Bed Liners • Bed Mats • Bed Rugs

6 miles West of New Castle on Harbor-Edinburg Rd.
 (between Rtes. 422 & 224) **724 652-1763**
 or 1-800-433-5969 • www.HenleysTruck.com

B&W Hitches • Toolboxes • Ladder Racks

If It's SERVICE You Want, CALL US!

State Line Roll-Off

10 Yards 14 Yards 20 Yards 30 Yards 40 Yards

Call Today for Pricing
724 654-4408

Ask for Bryan
 website:
 www.statelinerolloff.com
 email: statelinerolloff@yahoo.com

PRAXAIR
 Making our planet more productive

\$400 Rebate

Millermatic 255 MIG Welder
 951766 - msp \$3075

\$2675 After Rebate Price
 Offer through March 31, 2020

HELIUM
 Now Available to the Public for Party Balloons

2510 New Butler Rd. (Rte. 422 Butler Rd. Next to the Villa)
 New Castle, PA • 724 658-4591 • Mon.-Fri. 8-4:30



RHINO LININGS

**Spray In
Bed Liners**
Starting at \$469

**Your New Car
Alternative**

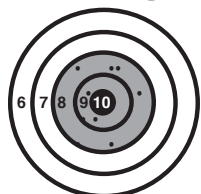
 Rte. 18, New Castle •
724 654-7741
gocrivelli.com

Strange But True

by Samantha Weaver

• You might be surprised to learn that sloths can hold their breath longer than dolphins – much longer. Dolphins come up to the surface for air about every 10 minutes, while sloths can go 40 minutes without taking a breath.

• It was writer and cartoonist James Thurber who made the following sage observation: “Humor is emotional chaos remembered in tranquility.” ©King Features

**Randall
Guns
Always
On Target**

 717 OLD
Ellwood-Zelenople
Rd., Ellwood City
724 758-2102
Outside
Ellwood City Area,
Toll Free
1-888-200-9505
Mon.-Fri. Noon-4pm
and 6:30-9:00pm,
Sat. Noon-4pm
rguns@zoominternet.net
www.randallguns.com

TIREX PRESS

 533 Taylor St., New Castle (Business Rte. 422) 724 652-0321
Mon. - Fri. 8-6; Sat. 8-1 • Schedule an appointment online www.tirexpresspa.com
6 Months, No Interest - See TireXpress for details


Size	Good	Better	Best	Size	Good	Better	Best
LT2158516	\$89.00	\$109.00	\$124.00	LT2757018	\$132.00	\$151.00	\$176.00
LT2257516	\$85.00	\$102.00	\$129.00	LT2957018	\$175.00	\$201.00	\$225.00
LT2358516	\$101.00	\$115.00	\$138.00	LT2756518	\$135.00	\$150.00	\$184.00
LT2457516	\$98.00	\$135.00	\$153.00	LT2656020	\$146.00	\$203.00	\$236.00
LT2657516	\$110.00	\$119.00	\$143.00	LT2756520	\$149.00	\$170.00	\$226.00
LT2857516	\$141.00	\$159.00	\$177.00	LT33125017	\$178.00	\$185.00	\$248.00
LT2358017	\$120.00	\$132.00	\$157.00	LT33125018	\$173.00	\$184.00	\$195.00
LT2457017	\$101.00	\$122.00	\$139.00	LT35125018	\$179.00	\$199.00	\$239.00
LT2457517	\$108.00	\$123.00	\$145.00	LT33125020	\$172.00	\$185.00	\$210.00
LT2657017	\$114.00	\$125.00	\$135.00	LT35125020	\$188.00	\$200.00	\$225.00
LT2657018	\$135.00	\$169.00	\$180.00				

SPECIAL BUYS

P275/65R18	Pirelli	Scorpion AT	\$129.95
P205/55R16	Kumho	Solus TA31	\$54.95
P225/65R17	Michelin	Energy Saver	\$119.95
P245/65R17	BFGoodrich	All Terrain	\$124.95
P245/75R17	Michelin	Defender	\$89.95
P205/60R16	Bridgestone	Ecopia	\$49.95
P195/65R15	Crosswinds	HP010	\$39.95
P265/70R17	Bridgestone	HT D684II	\$124.95
P215/55R17	Pirelli	P Zero A/S	\$89.95
P255/50R20	Kumho	KL33	\$99.95
P235/60R18	Solar	4XS	\$69.95
P275/65R18	Bridgestone	HT D684II	\$109.95
P275/40R20	Pirelli	P Zero A/S	\$119.95
P275/60R20	Goodyear	Wrangler SRA	\$129.95
P215/60R16	Kenda	KR217	\$49.95
P195/65R15	Nokian	Entyre 2.0	\$64.95
P225/65R17	Nokian	WRG4	\$96.95
P225/55R17	Nokian	WRG4	\$99.95
P235/45R18	Pirelli	P Zero A/S	\$89.95
P235/60R17	Nokian	Entyre 2.0	\$89.95
LT225/75R17	Nokian	LT2	\$69.95
P175/65R15	General	RT43	\$59.95
P215/65R17	General	RT43	\$80.95
P225/45R18	General	RT43	\$110.95
P215/70R16	General	HT60	\$89.95



Good • Better • Best

Cash and Carry Prices • Installation is an additional \$15 per tire

Size	Good	Better	Best
P185/55R15	\$45.00	\$57.00	\$94.00
P195/55R15	\$46.00	\$71.00	\$98.00
P185/60R15	\$44.00	\$57.00	\$96.00
P195/60R15	\$47.00	\$58.00	\$90.00
P205/60R15	\$49.00	\$60.00	\$97.00
P175/65R15	\$42.00	\$55.00	\$86.00
P185/65R15	\$46.00	\$55.00	\$90.00
P195/65R15	\$48.00	\$57.00	\$93.00
P205/65R15	\$52.00	\$61.00	\$96.00
P205/70R15	\$54.00	\$62.00	\$90.00
P215/70R15	\$57.00	\$65.00	\$99.00
P225/70R15	\$62.00	\$70.00	\$82.00
P235/70R15	\$77.00	\$87.00	\$89.00
P235/75R15	\$72.00	\$89.00	\$96.00
P205/50R16	\$51.00	\$74.00	\$99.00
P185/55R16	\$64.00	\$72.00	\$97.00
P195/55R16	\$50.00	\$66.00	\$116.00
P205/55R16	\$50.00	\$57.00	\$98.00
P215/55R16	\$56.00	\$72.00	\$116.00
P205/60R16	\$55.00	\$59.00	\$99.00
P215/60R16	\$55.00	\$59.00	\$105.00
P225/60R16	\$57.00	\$61.00	\$105.00
P235/60R16	\$67.00	\$65.00	\$116.00
P205/65R16	\$55.00	\$59.00	\$107.00
P215/65R16	\$56.00	\$62.00	\$106.00
P225/65R16	\$65.00	\$70.00	\$116.00
P235/65R16	\$65.00	\$74.00	\$119.00
P215/70R16	\$65.00	\$69.00	\$95.00
P225/70R16	\$72.00	\$70.00	\$95.00
P235/70R16	\$75.00	\$89.00	\$118.00
P245/70R16	\$77.00	\$96.00	\$138.00
P255/70R16	\$82.00	\$102.00	\$143.00
P265/70R16	\$95.00	\$99.00	\$150.00
P225/75R16	\$82.00	\$99.00	\$116.00
P235/75R16	\$88.00	\$99.00	\$125.00
P245/75R16	\$82.00	\$96.00	\$125.00
P265/75R16	\$92.00	\$108.00	\$114.00
P215/45R17	\$57.00	\$71.00	\$129.00
P225/45R17	\$58.00	\$72.00	\$116.00
P235/45R17	\$62.00	\$77.00	\$130.00
P205/50R17	\$56.00	\$72.00	\$130.00
P215/50R17	\$59.00	\$72.00	\$120.00
P225/50R17	\$59.00	\$75.00	\$116.00
P235/50R17	\$65.00	\$80.00	\$138.00
P245/50R17	\$73.00	\$93.00	\$123.00
P205/55R17	\$68.00	\$73.00	\$114.00
P215/55R17	\$58.00	\$68.00	\$114.00
P225/55R17	\$63.00	\$72.00	\$123.00

Size	Good	Better	Best
P235/55R17	\$67.00	\$77.00	\$134.00
P215/60R17	\$66.00	\$71.00	\$111.00
P225/60R17	\$65.00	\$73.00	\$119.00
P235/60R17	\$70.00	\$76.00	\$133.00
P215/65R17	\$65.00	\$71.00	\$127.00
P225/65R17	\$69.00	\$73.00	\$134.00
P235/65R17	\$75.00	\$89.00	\$148.00
P245/65R17	\$81.00	\$92.00	\$131.00
P265/65R17	\$89.00	\$108.00	\$120.00
P245/70R17	\$80.00	\$100.00	\$142.00
P265/70R17	\$91.00	\$105.00	\$140.00
P225/40R18	\$62.00	\$78.00	\$98.00
P235/40R18	\$65.00	\$82.00	\$125.00
P215/45R18	\$67.00	\$77.00	\$124.00
P225/45R18	\$63.00	\$84.00	\$149.00
P235/45R18	\$67.00	\$86.00	\$156.00
P225/50R18	\$66.00	\$84.00	\$131.00
P235/50R18	\$72.00	\$91.00	\$127.00
P245/50R18	\$81.00	\$89.00	\$125.00
P225/55R18	\$70.00	\$82.00	\$140.00
P235/55R18	\$75.00	\$77.00	\$151.00
P225/60R18	\$71.00	\$82.00	\$136.00
P235/60R18	\$76.00	\$100.00	\$165.00
P245/60R18	\$77.00	\$111.00	\$125.00
P265/60R18	\$86.00	\$112.00	\$161.00
P235/65R18	\$77.00	\$85.00	\$129.00
P255/65R18	\$89.00	\$115.00	\$129.00
P265/65R18	\$96.00	\$116.00	\$171.00
P275/65R18	\$102.00	\$135.00	\$173.00
P255/70R18	\$93.00	\$119.00	\$148.00
P265/70R18	\$105.00	\$115.00	\$163.00
P255/45R19	\$90.00	\$100.00	\$157.00
P235/45R19	\$94.00	\$97.00	\$131.00
P225/55R19	\$81.00	\$102.00	\$140.00
P235/55R19	\$85.00	\$119.00	\$130.00
P245/55R19	\$91.00	\$109.00	\$139.00
P245/45R19	\$89.00	\$103.00	\$129.00
P255/60R19	\$106.00	\$123.00	\$140.00
P245/50R20	\$83.00	\$120.00	\$152.00
P235/55R20	\$107.00	\$116.00	\$141.00
P275/55R20	\$101.00	\$122.00	\$179.00
P275/60R20	\$108.00	\$115.00	\$178.00
P255/55R20	\$114.00	\$120.00	\$145.00
P255/50R20	\$94.00	\$122.00	\$135.00
P265/50R20	\$97.00	\$137.00	\$154.00
P245/45R20	\$104.00	\$106.00	\$147.00
P255/45R20	\$98.00	\$114.00	\$155.00
P285/45R22	\$108.00	\$132.00	\$199.00

Oil Change

Up to 5 quarts **\$5 OFF**
Oil Filter Extra

Coupon Exp. Mar. 31, 2020

TIREX PRESS

Taylor St., New Castle 724 652-0321

**Affordable,
Honest
Auto Repair
Specialists!**

POT HOLE SPECIAL

2 or 4 Wheel Alignment

Most Cars
and Light Trucks **\$49.95**

Coupon Exp. Mar. 31, 2020

TIREX PRESS

Taylor St., New Castle 724 652-0321

Brake System Flush

Flush and Refill **\$49.95**
Starting at

Coupon Exp. Mar. 31, 2020

TIREX PRESS

Taylor St., New Castle 724 652-0321

Flat Tire Repair

In store only. Not all
flats are repairable **FREE**

Coupon Exp. Mar. 31, 2020

TIREX PRESS

Taylor St., New Castle 724 652-0321

Battery Check

Check Battery and
Charging System **FREE**

Coupon Exp. Mar. 31, 2020

TIREX PRESS

Taylor St., New Castle 724 652-0321

Transmission Flush

Flush and Refill **\$99.95**
Starting at

Coupon Exp. Mar. 31, 2020

TIREX PRESS

Taylor St., New Castle 724 652-0321

Coolant System Flush

Flush and Refill **\$99.95**
Starting at

Coupon Exp. Mar. 31, 2020

TIREX PRESS

Taylor St., New Castle 724 652-0321

GIR ROOFING & CONSTRUCTION

Serving Lawrence and surrounding counties for 20 years
724 730-5644
 PA065575

- Residential and Commercial Roofs
- Rubber Roof Specialist
- Soffit, Fascia and Gutters
- Siding, Windows and Additions
- All Work Guaranteed
- Emergency Leak Repairs
- No job too small • Insured

Best of the Best
 NEW CASTLE NEWS
 Back-to-Back!

Now Scheduling for Spring

Peterson's Tree & Leaf Removal PA097707

Selling Cord Wood

Bucket Truck Service • Free Estimates
 Fully Insured • Will Beat Any Written Bids
 Call Jim 412 596-1823 • New Castle Area
 petersonstreeandleafservices@gmail.com

Mangina Construction PA022773

- Garages
- Block Work
- Vinyl Siding
- Concrete Work
- Carpentry and Additions
- Basements & Foundations

Senior Discount - Free Estimates - Fully Insured

724 336-4472 724 652-3051

JUST JUNK IT!
 Removal of all waste & rubbish, free estimates, no need for expensive roll-offs!
724 730-2668

SLAB Firewood
 8' to 10' lengths you load pickup truck (Approx. 1 face cord)
 \$25 per load
724 730-3444

C. Drake & Co. Established 1988
 Residential and Commercial

MOWING: Weekly / Bi-Weekly
 Accepting New Customers
 • Edging and Mulching

Call Tim "Tubby" Drake
724 656-1479 or 724 730-3325
 c.drakeandco@comcast.net • PA085677

Kelly's Glass Block Windows

Custom Built and Installed
 Quality Work - Reasonable Price

Add Security to Your Home

- Break Resistant •
- Saves Energy •
- Low Maintenance •

PA008459
 120 Frank Way, New Castle **724 654-9491**

Aiken Refuse 724 758-9400



Commercial Dumpster Service:

2 Yard to 8 Yard
 Weekly or
 Bi-Weekly Service
 www.aikenrefuse.com

• Your Local Hauler •
FOR OVER 35 YEARS

Roll-Off Services:

10 Yard, 12 Yard, 15 Yard,
 17 Yard, 20 Yard,
 30 Yard, 40 Yard
 Rental Times Adjusted
 to Meet Your Needs
 www.aikenrefuse.com



Stay informed - Coronavirus (COVID-19)
Symptoms: Reported illnesses have ranged from mild symptoms to severe illness and death for confirmed coronavirus disease 2019 (COVID-19) cases.
 • These symptoms may appear 2-14 days after exposure (based on the incubation period of MERS-CoV viruses). Fever, Cough, Shortness of breath
 • If you develop emergency warning signs for COVID-19 get medical attention immediately. Emergency warning signs include*: Trouble breathing, Persistent pain or pressure in the chest, New confusion or inability to arouse, Bluish lips or face. *This list is not all inclusive. Please consult your medical provider for any other symptoms that are severe or concerning.

How to Protect Yourself from the Coronavirus
 Older adults and people who have severe underlying medical conditions like heart or lung disease or diabetes seem to be at higher risk for developing more serious complications from COVID-19 illness.

Know How it Spreads:

- There is currently no vaccine to prevent coronavirus disease 2019 (COVID-19).
- The best way to prevent illness is to avoid being exposed to this virus.
- The virus is thought to spread mainly from person-to-person between people who are in close contact with one another (within about 6').
- Through respiratory droplets produced when an infected person coughs or sneezes. These droplets can land in the mouths or noses of people who are nearby or possibly be inhaled into the lungs.

Help to Protect Yourself:

- Wash your hands often with soap and water for at least 20 seconds especially after you have been in a public place, or after blowing your nose, coughing, or sneezing.
 - If soap and water are not readily available, use a hand sanitizer that contains at least 60% alcohol. Cover all surfaces of your hands and rub them together until they feel dry.
 - Avoid touching your eyes, nose, and mouth with unwashed hands.
 - Avoid close contact with people who are sick.
 - Put distance between yourself and other people if COVID-19 is spreading in your community. This is especially important for people who are at higher risk of getting very sick.
- For more info visit: www.coronavirus.gov**

DISABILITY LEGAL CLINIC



Attorney
 Pamela J. Miller

If You've Been
**Denied Social Security
 Disability Benefits, Call or
 Stop in for a Free Consultation.**
724 656-1555

**CARLSON
 LYNCH**

ATTORNEYS-AT-LAW
 36 N. Jefferson St.
 New Castle

**NO
 Recovery
 NO Fee***

*Costs of Litigation
 Still Apply

BANKRUPTCY

Need a Fresh Start???

Know Your Options...

For a **FREE CONSULTATION**,
 Call or Visit

THE LAW OFFICE OF

MEDURE BONNER BELLISSIMO

www.medurebonnerlaw.com
 713 Wilmington Ave., New Castle, PA 16101
724 653-7855

We are a debt relief agency.
 We help people file for bankruptcy relief under the U.S. Bankruptcy Code.



Commercial and Residential

Garage Doors
 Operators • Rolling Steel
 Fire Doors • Repairs
 PA52610

724 856-6019

mcoverheaddoor.com

Like Us On Facebook!

Note: We have now taken over Barker Garage Door.

COX LANDSCAPE SUPPLY

Off Rte. 19 North, outside Harlansburg, PA
 Now Delivering Mon.-Sat. 7:30am-7:30pm
**Topsoil, Mulch, Decorative Stone,
 Plants and More**
 Pick up or Delivery available 724 944-5805

ROOFING

Replacement Windows Siding

Soffit & Fascia
 Room Additions
 Garages • Decks
 Kitchens & Baths
 Replacement Doors



L & D Construction PA028566
 Locke Home Improvement **724 652-0531**

R&R Lawn Care

Mowing, Trimming,
 Shrub Maintenance,
 Gutter Cleaning, etc.
 Insured, Free Estimates: 724 652-9372
 PA085521

**1.1 Acre
 Building Lot**
 with all utilities,
 Neshannock Twp.,
 \$60,000;
724 651-7102

Yohman Landscaping and Concrete, LLC

- Concrete Sidewalks/Driveways
- Exterior Masonry
- Exterior Carpentry Work
- Interior Remodeling
- Stone Fireplaces
- Finish Basements
- Basement, Cinderblock, and Concrete Repair
- Small Excavation Work



724 730-9007
 PA#148727

Community Happenings

NOTICE: Please contact your event destination before traveling to make sure the event hasn't been cancelled or postponed.

MAR. 27: POSTPONED - Weekly Bargain Bulletin Annual EGGstravaganza! Not to worry... the event will be rescheduled at a later date. Watch our paper, website and facebook page for updates.

FRIDAY BINGO
Closed until further notice. Watch for reopening! Sallmen's Social Center, 110 E. Division St., New Castle

MAR. 28: CANCELLED, Quilt Show; Mercer County Municipal Building, 35 Auction Rd., New Wilmington

MAR. 29: POSTPONED to April 26: 28th Yankee Lake Spring Motorcycle Swap Meet, 10am-4pm, \$5 admission; 1814 State Route 7 North East, Brookfield OH 44403; info 330-448-2074 ^{3/27}

MAR. 29: Check with your local church/temple/parish to see if they have a live stream or video for your worship service/mass.

NOTICE: American Legion Post 343 is closed through March 29, 2020. **134 N. Jefferson St., New Castle, PA 16101, 724 658-3990. Veterans please be safe!**

APR. 2: Online Bible Study, 7:00am every Thursday with Pastor Joy, current study: "Courageously Pro-Life", (video replay is available any time); Find us on the Wayside Emmanuel Church facebook page

APR. 4: POSTPONED: Volant VFC Gun Raffle has been postponed until May 16. For more info visit volantvfc.com

APR. 4: CANCELLED, Easterfest; Maitland Lane FMC, 121 E. Maitland Lane, New Castle

POSTPONED: New Castle Relay for Life, May 9, at Cascade Park. New event date to be determined soon. Watch for details.

FIRST RESPONDERS, Nurses, Doctors, Fire Dept., Home Health Care: Free Sandwiches with coffee or water, 12noon or 4pm; St. Andrews CYC at Caravan II Albergo, 1465 Sampson St., New Castle

BOOKS WANTED: for used book sale in June, Northminster Presby. Church, 2434 Wilmington Rd., New Castle, accepted Mon.-Thurs. 9am-3pm, rear entrance

Phone # to Keep:

Neshannock Twp. Police Department Tip Line, call or text 724 761-4445, non-emergency use only

Lawrence County Drug Task Force, make an anonymous tip, toll-free 855 564-6116

Lawrence County Animal Abuse Hotline; toll-free 855 870-8081

Lawrence County District 61 Alcoholics Anonymous Hotline 724 923-0236

To Advertise Events: free events, 25 words, no charge; paid events, 1-25 words: \$6.00 per edition; 26+ words: +25¢ per word, per edition. Deadline 5pm Tues. 724 654-5529

NOTICE: The Weekly Bargain Bulletin office is **closed to walk-ins.**

NOTICE: The WBB is not accepting personal for sale items until the social distancing protocols have been lifted by governor Tom Wolf.

Please call the office at 724 654-5529 to place prepaid business ads.

Can't get out? Read us ONLINE! www.WeeklyBargainBulletin.com

TOOL SUPERMARKET: Tool Pickers, Traders, Buyers, Importers, Sellers, Recyclers. New/Used Tools, Machinery and Contractor's Equipment. Woodworking, Metalworking, Mechanics, Industrial, Tradesmen, Hobbyists, Collectors, Antique to Modern/Parts/Rentals/Service/Advice. "Everybody Uses Used Tools." Free Flyer & Used Tool List; call 1 800 783-4766 ³⁻²⁷

HORIZONTAL HIVES: Increase healthy bee population, a lot less labor for busy bee-ple; also swarm traps; David Byler, 257 Riverside Lane, New Castle, PA 16105 ^{4/3}

CAR ACCIDENT Injuries? 20% Attorney's Fee for limited time only. Visit hstumpesq.com. Call Attorney Harry Stump 412 281-5325 ⁴⁻¹⁷

Vendor/Crafter WANTED

VENDORS WANTED: Flea Market, Apr. 25, 9am-1pm @ Croton United Methodist Church, 910 Croton Ave., New Castle; for table reservation/info call 724 654-9951 ^{3/27}

CRAFTERS WANTED for Fall Craft and Vendor Fair, Sept. 12, 10am-3pm, table \$25, with electric \$30 (limited); Wayside Emmanuel Church, Nesh. Twp. Call/email for reservation: 724 652-6439, waysideemmanuelchurch@gmail.com

Shoots

EASTER HAM Shoots: Every Tuesday through April 14, 6:30pm. Meat Package and Money Shoots, field guns only, bring a friend and have some fun; Ellwood Wampum Rod and Gun Club, Rte. 288, Wampum ⁴⁻¹⁰

TURKEY SHOOT: POSTPONED until April 11, 18, 25, Saturdays, 7pm, .680 Choke Limit, Spring Special, 12 meat rounds \$25; Castlewood Rod and Gun, Shaffer Rd., Princeton, 724 924-9010 ⁴⁻²⁴

Bill's Plumbing and Electrical Service

Repairs and New Installations

Plumbing
• Sewers
• Water Lines
• Gas Lines



Electrical
• New Services
• All Types of Electrical Repairs

Bill Ingram 724 656-1311 724 651-8567

Insured
Senior Citizen Discount
PA035574

WE ALSO REMODEL
kitchens, baths,
basements, etc.

SHARPENING of chain saws & mower blades, carbide & steel circular saws, router bits & sharper cutters, jointer & planer knives;
Snyder Saw Service
724 758-6782

FREE EVALUATION of your Social Security Disability Claim.
Call Attorney
Pamela Miller
724 656-1555
No Recovery - No Fee

MOBILE TECH PA

20+ Years of Computer Tech/Services



Damon D'Ambrosi
Computer Tech
Cell 724 714-3330

mobile_tech_guy@hotmail.com

Recipe Corner

4-1/2 C. frozen shredded hash brown potatoes, thawed

6 Tbsp. butter or margarine, melted

1-1/2 tsp. salt

1/4 tsp. pepper

FILLING:

1/2 C. chopped onion

1/4 C. butter or margarine

1/4 C. all-purpose flour

2 tsp. chicken bouillon granules

1 tsp. Worcestershire sauce

1/2 tsp. dried basil

2 C. milk

3 C. cubed cooked chicken

1 C. frozen peas, thawed

• In a bowl, combine the potatoes, butter, salt and pepper. Press into six greased 10 oz. custard cups, set aside. In a saucepan, saute onion in butter. Add the flour, bouillon, Worcestershire sauce and basil. Stir in the milk. Bring to a boil, cook and stir for 2 minutes or until thickened. Add chicken and peas. Spoon into prepared crusts. Bake, uncovered at 375° for 30-35 minutes or until crust is golden brown. Yield: 6 servings.

CHICKEN IN POTATO BASKETS

PETERSON Property Management

SPRING IS COMING...

We can help with your
Home and Lawn Care Services
• Mowing • Landscaping • Spring Cleanup
• Power Washing • & More!!!!

Call Today for Free Estimates!
724 614-2153 • PA148402

"Help Build the Flock" Wood Duck Box Installation

on your pond, lake, or marsh, includes all boxes and/or all pipe, brackets, labor and installation costs within 20 miles of Pulaski (add \$1 per mile outside 20 mile radius)

2 Boxes Installed
Extended to April 1, 2020
SPECIAL: \$249 + state sales tax
Regular: \$299 + state sales tax
Ask about over 10 box discount

Call Wes Osborne
724 730-3444
Crit-R-Done® Pulaski, PA

Help increase the wood duck population and enjoy the beautiful wood ducks on your property. Also offering yearly cleanout maintenance plans



Keystone Construction

Kitchen & Bathroom Remodeling
Roofing, Decks, Siding,
Interior Painting,
Custom Built Mini Barns

Nathan Hostetler

34 Jacobs Rd.,
Carlton, PA 16311

814 720-6115 • PA150086



SHAFFER TREE SERVICE

• Land Clearing • Bucket Truck Service
• Tree Trimming • Chipper Service
• Storm Damage • Snow Plowing

Over 50 Years Experience • PA085463

Free Estimates • Fully Insured

"No Tree Too Large - No Job Too Small"

724 658-1060

Owned & Operated by Larry E. Shaffer

515 Knox Ave., New Castle, PA 16101

www.shaffertreeservice.com

We Specialize In
Tree and Stump Removal

JPH Lawn Care

Mowing,
Weeding and More
Fully Insured
724 730-3341
PA114470

Buy Cars

at
AUCTION
PRICES!
800-422-8884

ALLEGHENY CONCRETE, LLC

Specializing in
All Types of Masonry
Residential • Commercial • Free Estimates
Insured • Satisfaction Guaranteed!

724 813-1798

www.allegHENYconcrete.com • PA141265
facebook @ Alleghenyconcretellc

RICH GORMLEY JR. & COMPANY

Lawn Fertilization
& Lawnmowing

724.674.9080

Missed Weeds,
Dandelions, and Crabgrass?

**Get the attention
you deserve.**

Personalized Service with
Satisfaction Guaranteed.

Rich Gormley Jr.
owner

Locally Owned



• "Candle nubs, that little bit left when the candle has burned down all the way, can be removed from a candle-holder by setting the whole thing in the freezer for 10-15 minutes. The wax surface hardens and shrinks, making it easier to chip out. The same goes for linens that have wax drips: freeze and chip away, then use a de-greasing spot cleaner."
- Y.G. in Arkansas

Butterfly Shrimp & Fries - **\$8.99**
Pepper and Egg Sandwich - **\$7.99**
NEW Veggie Burger - **\$8.99**
Fish Sandwich - **\$7.99**
FRESH COD - **\$10.99**

**Reuben
Sandwich**



**GRILL
on the
HILL**

3208 Wilmington Rd.
New Castle
Tues.-Sat. 7-7; Sun. 8-4
724 856-3181 • Catering Available

CARRYOUT AVAILABLE

El-Canelo KIDS!

Any kid* struggling for a hot meal
2 Free Beef or Chicken Tacos with Rice

Through Sunday, March 29, 2020.
One Free Taco Meal per child, per day. CARRYOUT!
*Children under 18. No Purchase Necessary.

2201 West State St., Union Township 724 657-2004
2506 Ellwood Rd., Shenango Township 724 656-5141
2421 Wilmington Rd., Neshannock Twp. 724 657-2901

FISH DINNERS

Holy Spirit Parish at St. James

4019 US Rte. 422, 1 1/2 mi. East of Ohio/PA Line

**Mar. 27
Apr. 3**

CANCELLED!

**Handmade
1/2 lb Burger
Combo...\$7.99**
with fries and fountain drink

**SPICY
CHICKEN
Sandwich**
with fries... **\$5.99**

**BILL'S SANDWICH
SHOP**

UNION-1824 W. State St., New Castle 724 654-1921

Call Ahead for FAST TAKEOUT SERVICE

• Easily thread a needle with hairspray. Spritz the end of the thread with a little high-hold hairspray and pull taut. It will be much easier to thread.

Now Here's A Tip

by JoAnn Derson

• Fun get-together project for kids: Have everyone doodle on a large posterboard. At the end of the night, trace a puzzle pattern and cut it up, making a large floor puzzle. You can bring it out at the next play date. The smaller the children, the larger the pieces! - A.L. in FL
©2020 King Features

**Brown's
Country
Kitchen**

**OPEN DAILY
7am - 6PM
for Take-Out**

Ellwood-Portersville Rd.
Portersville, PA
724 368-3227
Follow Us
on
Facebook

**We Truly
Appreciate Our
Customers'
Support during
this time.**

**open For
CARRYOUT**

**OPEN
Mon.-Thurs. 11-3
Fri. & Sat. 11-6**

**Neshannock Creek Inn
RESTAURANT**

804 Main Street • Across from the boxcars in Volant, PA
724 533-2233 Closed Sunday

The Spats



by Jeff Pickering

Business Opportunity

Equity Partner Wanted
to help in the startup of
Very Profitable Business.

Call 412 860-9888
(no texts please)

Email: cawoffice@excite.com

Secure your future
(business not effected by coronavirus)

**Gilliland's
Market**

Est. 2014
Quality Meats & Groceries
Proprietors: Jamie and Dee Anglin

109 S. Market St., New Wilmington
Mon-Thurs. 9-5; Fri. 9-6; Sat. 9-4 • 724 946-3508
GillilandsMarket on FACEBOOK

**Due to the circumstances
all prices will be subject to change
day to day.**

COUPON

\$5.00 OFF

purchase of

\$30.00 OR MORE

Offer expires April 30, 2020 • Cannot be combined w/any other offer



2612 New
Butler Rd.,
New Castle
724 598-3500

**America's
Favorite
Foods**

**For All Your
Glass Needs**



1064 Beckford St., New Castle • 724 654-7241
cityglasscoinc.com • 800 478-8188

• Commercial Storefronts • Shower Doors •
• Residential Glazing • Mirrors •

WINDSHIELD GLASS

With this ad you can save
\$50 OFF
your insurance deductible or
\$10 OFF
non-insurance deductible
Some restrictions may apply

Tommelleo & Associates

Are you paying too much for insurance???

Auto • Home • Business • Life

Call us to compare! 724.202.7650

www.tommelleoins.com

Just Like Cats & Dogs

by Dave T. Phipps



©2020 King Features Syndicate, Inc. All rights reserved.

Randy's

**TOWING
& RECOVERY**
New Castle, PA
724 652-2750

Wrecker
Service
Flatbed
Service
Buying
Junk Cars

Unexpected Emergency?



Fast and Friendly • • • Offering you that personal touch

MUNDO'S AUTO & CYCLE Detail & Sales, Inc.

2425 River Road, Ellwood City, PA 16117
724 758-2106 or 724 758-2012
Website: MundosAuto.com

10% Discount for ALL Veterans
**We Do All Types of Mechanical
and Electrical Work**

State Inspections \$37.50 + tax
Motorcycle \$21.99 + tax
Trailer \$29.99 + tax

State Emissions \$37.50 + tax

Both Inspection
Discount \$59.99 + tax

Brakes and Rotor Special

(front or rear):

Car \$159.99 + tax
1/2 Ton Truck or SUV . \$209.99 + tax

Oil Change Special (up to 5 quarts):

Conventional Oil \$29.99 + tax
Synthetic Oil \$39.99 + tax

Fluid Film Undercoating

for all types of vehicles **\$129.99**



Mon.-Fri. 9am-5pm • Credit Cards Accepted

GUN & SPORTING GOODS SHOW

MARCH 28 (9AM-4PM) - MARCH 29 (9AM-2PM)

CANCELLED

Hidden Valley Sportsmen's Club

268 Gilkey Road, West Middlesex, PA • 724-528-2700
(an IRS approved 501(c) non-profit organization)

Notice:
Fish Dinners
Cancelled
until Friday, April 3



New Galilee CommUNITY Hall

Rte. 168, New Galilee
For more information Call Vicki 724 312-4820

DutchCraft Const. LLC

~ Former Amish Builders ~

Chris Byler - Owner / Sales

• Pole Barns • Garages

• Metal Roofing

• Siding • Windows

724-202-9747 or 216-469-0322 cell
PA 146758 OH 4245-41

**A Debt Relief Agency
for Over 20 Years!**

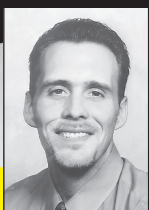
BANKRUPTCY Chapter 7 or 13

Reasonable Fees • Good, Friendly Service
Save Your House! Stop Creditor Calls!

Butler County Attorney
Dai Rosenblum, Esq.

Free Consultation • 724 287-5300

Kevin's



**Window
& Gutter
Cleaning**

Residential ♦ Commercial

724 977-7701

PA151044

Paws Corner

by Sam Mazzotta

DEAR PAW'S CORNER: My mom says I need to brush my kitten's teeth every day. "Terry" is about four months old and doesn't like this very much. Do I have to brush so often? - Caitlin, via email
DEAR CAITLIN: Brushing your pet's teeth can be kind of tough at first, when they're not used to it. The best way to do it is to make the experience a good one for Terry as much as possible.

- Use toothpaste made specifically for pets, with a meat, poultry or dairy flavor.

- If you don't have one, get a finger brush designed for brushing small pets' teeth. You also can use a soft cloth or cotton ball.

- Hold Terry in your lap for a few minutes before starting the brushing routine, petting him until he is more relaxed.

- Gently use your index finger to lift Terry's lip on one side - not very far, just enough to expose his fang and a couple of teeth.

- Quickly but gently swipe the finger brush downward over Terry's exposed teeth, and let go of his lip.

- Repeat on the other side. In between each swipe, Terry will lick away the flavored toothpaste. Give him lots of praise and pats, and maybe let him lick a little toothpaste off of the brush. At first, Terry may only let you swipe each side once. That's OK, since he's getting used to the brushing process. If you are consistent and do the above routine every night, and focus on keeping him relaxed, he will gradually let you brush more of his teeth.

©2020 King Features

New Castle Transit Authority

**We're
Going
Your Way**

**To
Walmart**



For Schedules, call 724 654-3130, Option 4
or visit www.newcastletransit.org

Rudy Spielvogel
Mobile DJ Service

**SPINNIN
SPIEL**

Experienced / Dependable

- Wedding Receptions
 - Anniversaries
 - Christmas Parties
- 724 971-4706**

• "Do you have a toddler or preschooler who likes to lock him- or herself in the bathroom? We found a great solution. We slipped a small section of pool noodle slit down the side over the door, high enough to be out of reach of little hands. The door simply won't close (or slam!), but an adult can easily take it off if necessary." — A.P. in Nevada

New and Used TIRES

- General Maintenance
- Repairs
- Alignments
- PA State Inspection

844 E. Wash. St.,
New Castle, PA • 724 923-9477 • Owner: Carl Hairhoger



Old Hickory SHEDS

- all sizes • rent to own or purchase

Also Available:
Metal Carports & Garages

422 Landscape Supply, LLC

3298 US Rte. 422, New Castle, across from old
Kalajainen Boat Sales • **724 658-4829**
Winter Hours By Appointment

Now Here's A Tip by JoAnn Derson

• Turn on the hot water for three or four minutes to loosen debris on shower walls. It's much easier to clean when the tile is warm and steamy.

• Get rid of smelly stains on your cutting board with a lemon. Use the cut side of a lemon to scrub your plastic or wood board. For a little extra scrub, sprinkle the lemon with salt. ©2020 King Features

Our Daily Bread

Encouraging Words

Read: Hebrews 10:19-25

"Let us consider one another, . . . exhorting one another." — Hebrews 10:24-25

Amy had just about had it with her lively 2-year-old. The week had been difficult as she tried to stay ahead of her little tornado. Over and over again Amy had to say no or give patient reminders about correct behavior. It required vast amounts of emotional energy.

Then came the Sunday evening service. There was no junior church, and her little girl was at her wiggly, loud-whisper, constant-motion best. At one point all that could be seen was her feet sticking straight up in the air as she lay on the pew. Amy was frustrated and embarrassed. What must the older couple sitting right behind her be thinking?

As she came into the church the next week, she ran into the older gentleman. "Uh-oh," she said to herself, "Here it comes." She was surprised by what he said. "What a great little girl you have. She's a special gift from God to you." It was just the kind of understanding and encouragement she needed to make the task of mothering her active little girl easier.

We go to church for a lot of reasons—worship, giving, learning. According to Hebrews 10:24-25, we are also there to encourage one another. Perhaps today you can offer the kind of encouraging word that lifted Amy.

By Dave C. Egner
A few kind words can make the difference between giving up and going on.

7-20-97 ©2020 Our Daily Bread Ministries, Grand Rapids, MI Used by Permission

William E. Vavrock, CNHP Certified Natural Health Professional

Located Rte. 65, North Sewickley Twp.

By appt. only • 724 312-5635

Natural Help for Optimum Health

*Good Health should be our most important asset.
Why not take charge of your health today.*

Most people on my whole health program see all their numbers go down: sugar, cholesterol, blood pressure, and weight. The only thing that increases is your energy, quality of sleep, and general overall health improves.



TURKEY RUN LANDSCAPING

- Leaf Removal
- Chipper Service
- Stone Work
- Lawn Care
- Tractor Service / Brushhogging
- Firewood: Delivery or Pickup



Quality Service, Guaranteed!

Experienced • Fully Insured • PA116962

724 730-3977

email: turkeyrunlandscaping@gmail.com

• SPRING CLEANUPS •

HILLTOP MILLWORK LLC

- CABINETS • MILLWORK
- FINISH CARPENTRY
- WINDOWS & DOORS • INSTALLED

MICHAEL F. CALABRESE

724-657-7435 • mcalabrese1@yahoo.com

Free Estimates Fully Insured PA#142007

Miss One-Day Garage "Taylor" says,

"STOP in One-Day Garage for a Custom Garage, 3-Season Room, or Backyard Deck."



**2-Car Garage
\$7299***

Including foundation, labor and materials.
www.onedaygarage.com

ONE-DAY GARAGE

412 271-7744

PA049092

*prices may vary according to local code and distance

**Jones
Electric**

**Commercial
& Residential**

- Repairs
- Home Services
- Lighting • Installations • Etc.

Phone: 724 944-5053

PA120019

Email: DaveJones9@hotmail.com

1505 Patterson Rd., New Castle, PA 16101



B&B Diving Specialties

The Toy Store for Skin and Scuba Divers

Ideal for Cruises: Mask, Fins & Snorkel Sets \$99.99

- Full Line Scuba & Skin Diving Equipment • Gift Certificates
- Registration for Snorkel and Scuba Classes - Scuba Schools International and NAUI Dive Training Facility

1815 Churchill Rd., Hillsville, PA 16132

724 667-9448 • PO Box 277

Open Mon. & Fri. 10am-5pm, Sat. 10am-2pm

Other hours by appointment • 724 309-5595 cell

**SCUBAPRO
Atomic**



**Trailer Mounted
Work Platforms**

1015 Moravia St., New Castle

Mon.-Fri. 7-4:30, Sat. 8-12

724 658-2400

• 2976 E. State St., Hermitage • **724 981-5800** •

ZELIC'S Sewer and Drain Company

- Gas Line and Water Line Installation
- Septic Tank and Sewer Repair and Location
- Hot Water Tank Installation
- Excavating / Grading
- Dump Truck Services
- Plumbing
- 24 Hour Service
- Free Estimates

724 847-7233

Koppel, PA

**Backflow
Water
Valve
Certified**

PA059306

ROZZI BUILDERS

- Concrete Work
- Block Work
- Carpentry
- Basements
- Patios
- Garages
- Additions

724 652-2640

Free Estimates • Fully Insured



T&K Auto Repair

- Computer Diagnostics
- Tire Mounting & Repair • Brakes
- Tune-Up • Suspension • Exhaust

1705 Eastbrook Rd., New Castle
Behind Rich & Freed Auto Parts
Mon.-Fri. 8-5,
Sat. by appt.

724 614-7042


PA State Inspection

Motorcycles • Cars • Trucks • Trailers

BRYAN'S AUTO BODY & COLLISION CENTER

441 State Route 18, New Wilmington
(1/4 mi. South of UPS on Rte. 18)
724 674-1466



*From Rust Work to
Major Collision and Restorations*
All Insurance Work Accepted

IN AN ACCIDENT?

Insist Bryan's Auto Body fixes your car,
where quality comes first.

Outdoor Opportunities By COL (Ret.) Grey D. Berrier II

Let's Not Take Our Self-Isolation and Social
Distancing Sitting Down (Part 1 of 2)



It was Heraclitus of Ephesus, a Greek Philosopher (535-475 BC), who is credited with the perceptive quote, "The only thing constant in life is change". Here we are 2,500 years later and we are all dealing with sweeping changes to our daily lives and routines as the entire world deals with the vast impacts of the COVID-19 Coronavirus. We've probably all seen PENNDOT's electronic message boards conveying the important message to: "Stay Home, Limit Travel, Save Lives." It is critical we all adhere to this guidance because while you may be healthy, you could become infected and an unknowing carrier of the Coronavirus with few or no symptoms, who goes on to infect someone with a weakened immune system due to advanced age or a preexisting medical condition, with potentially catastrophic results. By observing self-isolation and practicing social distancing, we can hopefully cut the total number of people who become infected, much like removing a few dominoes stop a massive domino line from entirely falling.

On Monday, March 23, 2020, PA Governor Tom Wolf issued a mandatory Stay at Home Order for 7 PA counties hardest hit by the Coronavirus. Those counties are home to 5.5 million people (over 40% of our state's population) and account for 75% of the state's confirmed Coronavirus cases so far. In those 7 counties, which includes Allegheny County here in Western PA, only essential travel, such as going to the grocery store or pharmacy, is permitted. Here in Lawrence County and our adjacent PA counties, it is highly recommended we too only leave home for essential needs, but taking a walk, riding a bike, and being out in nature for exercise is allowed; however, people should practice social distancing and stay at least 6-feet away from others.

If you're like me, you'll want to take full advantage of the opportunity we still have to get outside and exercise, while practicing self-isolation and social distancing. Maybe you've already walked the same route or various ones around your home numerous times by yourself, with your dog, or with the

person/people you currently live with; so, please allow me to share a few other options where you can get out and walk, here in Lawrence County. We are blessed to have numerous locations ideal for walkers and hikers, many close to where you live or possibly shop for your groceries. There is Cascade Park in New Castle, Ewing Park in Ellwood City, and Pearson Park in Neshannock Township. Probably lesser known are the Neshannock Trail that starts along Croton Avenue in downtown New Castle while paralleling Neshannock Creek, along with the West Park Nature Center with its numerous trails, out by the New Castle Airport.

The 11-mile Stavich Bike Trail, which traverses portions of Pennsylvania and Ohio, is popular with walkers, joggers, runners, and cyclists, who frequently have long stretches all to themselves. If a more remote hike is your desire, McConnells Mill State Park has a myriad of marked trails, many of which lead to picturesque scenery; but be aware the amenities, such as public restrooms, are closed. Traversing Lawrence County is 40-miles of the North Country National Scenic Trail, which offers 29 miles of off-road hiking and 11 miles of connecting road walk. The opportunity exists to section hike the North Country Trail in several mile segments, while encountering few, if any, other individuals out on the trail. Other options to walk where few others tread, include Lawrence Counties six PA State Game Lands: SGL 148 (near Wampum), SGL 150 (Pulaski Township), SGL 151 (Plain Grove Township), SGL 178 Neshannock Township), SGL 216 (near Harlansburg), and SGL 284 (near Leesburg). Walkers on PA State Game Lands are encouraged to always wear fluorescent orange, much like hunters do, to be seen and remain safe while afield.

Let's not take our individual efforts to fight the Coronavirus sitting down. If we all step up and do our part, which includes regular exercise, to remain healthy and keep our immune systems resilient, we can endure this significant change. **God Bless, Be Safe, and Great Outdoors!** ©WBB 2020

R&R Contracting

724 987-3512

- Remodeling • Roofing • Siding
 - Soffit & Facia • Concrete • Decks
 - Sidewalks • Porches • Additions
 - Bathrooms & Kitchens
- Fully Insured • PA034593

Jim's Painting & Remodeling

Interior/Exterior Painting,
Carpentry, Electrical,
Plumbing & More
Insured • PA120084
• Free Estimates
724 714-8209
Credit Cards Accepted

•• Now at 2 Locations ••

M-Tu-Sat., 9:15am-5pm; W-Th-F, 9:15-8pm
Every other Sun. by Appt. 12:30-5pm


NOTARY

- Licensing
- T-Plates
- Titles
- Motor Vehicles
- Trailers
- ATVs
- Boats
- Snowmobiles

•New Castle: 1103 Sunny Ave.
corner of Atlantic Ave., New Castle
724 658-2931 or 724 971-1310

•Erin Owls II Is Now Online!
118 Elmwood St., New Castle, PA 16101
724 598-1845

We accept Sorry - No personal checks accepted

*Always Remember the Giver of
All Gifts - Jesus*

PAGLEY CONSTRUCTION



Roofing Residential
Siding Commercial
Decks Free Estimates
Additions Fully Insured
Painting: Interior & Exterior
And More

Alex Pagley, Jr. 724 657-8313
God Bless and Have a Nice Day

PA041687

DnB Promotions Is Here To Help

**If Your Business Is Open And In Need
Of Tshirts, Sweatshirts, Hats, Safety Vest
Or Other Items, Call DnB Promotions, We
May Be Able To Help. DnB Works With
Over 3500 Vendors Across The U.S.A.**

Call 724-856-3045

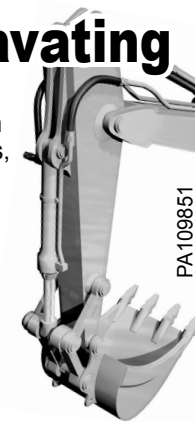
www.dnbpromotions.com
Screen Printing • Embroidery • Promotional Products

J.E.L. Excavating

Sewer Tie Ins, Water Tie
Ins, Septic Systems, Storm
Drains, Basements, Footers,
Driveways, Sidewalks, Lot
Clearing, Ponds, Brush
Hogging, Retaining Walls,
Yard Installs, Swimming
Pools and Most Other
Excavating Needs.

**Experienced • Insured
Free Estimates
724 730-0980**

362 Enon Rd., Enon Valley, PA 16120



PA109851

Penn-Ohio Roofing & Siding Group LLC

Roofing • Siding • Windows • Insulation

**Your ONLY
GAF Master Elite
Roofing Contractor**

"Voted best of the best 8 years in a row"

724 877-7172

3744 New Castle Rd., West Middlesex, PA 16159 • PA145216



www.pennohiorc.com

There's Hope

Tune In
90.1 FM
WCRF/WVMN

We Buy Used Rifles & Shotguns;

724 699-8635

For Real Christians Only

Are you concerned about the
Coronavirus?

Please read the following advice from God.
Read Psalm 91 and memorize verses 9&10.

Now claim that promise for you
and your house.

v.9 For you have made the LORD,
my refuge, even the Most High,
your dwelling place.

v.10 No evil will befall you, nor will
any plague come near your tent.

If you do not feel that you are a
Real Christian and cannot claim that
promise, but would like to,

Please contact us at:

cawoffice@excite.com or

Crystal River Ministries, Inc.

130 Hips Terrace, Portersville, PA 16051

Hoffmeier Self Storage

724 333-6870

Outside Storage Available!

River Rd., Ellwood City

Rte. 65 - Between Ellwood City and New Castle

Rates Starting
at
\$1.00
per day

>>> NIXON <<< Home Improvements

We install vinyl siding, soffit and fascia,
replacement windows and doors,
roofing and seamless gutter

• Free estimates • Fully insured

724 730-4272 • PA021595
E.P.A. Lead Safe Certified • OSHA Certified

GOT \$6.00? Your ad
could have been HERE!
Call the office & leave
your ad before 5:00pm
on Tues. to advertise a
rental just like this! Wed.
is too late! 724 654-5529

MOUNTVILLE STORAGE

Convenient
Safe
Portersville
Location

10x20 / 10x10 / 5x10 Indoor Units
Mini Storage Units and Outdoor Storage

724-256-4151

MountvilleStorage.com

Wanted: Junk VEHICLES

must have title, call
last for best price!
724 657-3692

Read Psalm 23
The writer went
through many
personal and family
tragedies. Through it
all he knew God was
with him. That
thought brought him
great comfort to help
him through, not past,
those tragedies. MAB

For updates about the
Weekly Bargain
Bulletin, please visit our
facebook page.

**Rent A Large
Efficiency
Apartment**
\$353
per month,*
includes utilities

**1 Bedroom
Apartment**
\$443
per month,*
includes utilities

*as available

Senior Citizen Complex

- Main Floor Lounge Area
 - Full Security Door System
 - Basement Storage Compartments
 - Distress Signal For Each Apartment
 - Parking
 - Full Kitchen
 - Elevator Service
 - Laundry Facilities
 - Recreation Room
 - All Utilities
- Furnished

125 W. North St.,
New Castle
724 658-0520



• • RENTAL SECTION • •

Oak Leaf Gardens

1-2-3 Bedroom Apartments

1139 Pin Oak Dr., New Castle

Phone: 724 652-6632 • Fax: 724 498-0428

www.OakLeafGardenApts.com

Vista South and Sheridan Apartments

Senior/Disabled Living Only

1 bedroom, utilities included

Wait List Open • 724 658-6181 • New Castle

Westview Terrace

2, 3, & 4 Bedroom Townhouses

910 S. Grant St., New Castle • 724 510-0190

All: EHO and HUD.

Rent and Deposit based on income.

Must be able to pass background check.



Warehouse For Lease:

13,500 sq. ft.,
724 651-7102

WEST WASHINGTON
St., New Castle, 3 Bed-
room, 1 Bath House,
mandatory background
check, no pets, no smok-
ing, \$550 plus security;
724 730-5556 3-27

UPPER EAST Side,
New Castle, 3 bedroom
house with large add-
on, 1 car garage, \$700
month, plus utilities and
security; 724 944-4793
03-27

APARTMENTS

Ellwood City,
Large 2 Bedroom,
\$510+ electric;

Corner Rose Ave. &
East Washington St.,
New Castle,

1 or 2 Bedroom,
\$495+ elect.;

724 657-7319

OFFICE SPACE AVAILABLE

Wilmington Rd.,
Neshannock Twp.,

4 rooms +
reception area,
all utilities included,
excellent parking,
\$550/month;
724 652-4912

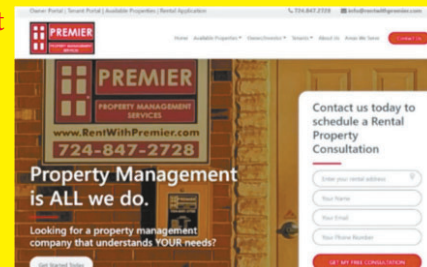
We've renovated our website!

Premier Property Management

Services is proud to launch our
newly redesigned website,

www.RentWithPremier.com.

Our new website provides a
clear message of who we are,
what we stand for, and where
our value lies when delivering
property management solutions.
It also boasts a clean design
and consistent site-wide
navigation.



If you are looking for a property
management company that
understands YOUR needs,
contact us today at
(724) 654-2800 to schedule a
FREE rental property consultation!
Also, check our available
listings online at
www.RentWithPremier.com.

**Property Management
is ALL we do.**

VETERAN'S LAWN CARE

• **Mowing Most Lawns \$20 •**

**Call Jim Today
for Rock Bottom Prices
You'll Save Money!
724 656-8453**

Free Weed Control All Summer Long, Call Today
Proud Army Veteran • God Bless America

LIMESTONE & TOPSOIL

Wholesale • Retail • Delivery Available

- Base & Top Limestone
- EXCAVATING**
- Fully Insured • Free Estimates

Beyond Corp., LLC PA086830
No job too small • 724 730-2296

EASTBROOK ANIMAL HEALTH SERVICES

**Dr. Marica Margolis
Dr. Joseph Rought**
1167 Rogers Rd.,
New Castle, PA 16105

Providing a full service hospital with services such as x-rays, surgery, laser therapy, vaccines, microchips, and flea/tick/heartworm preventatives available!

Office Hours:
Monday: 8am-4pm
Tuesday: 8am-7pm
Wednesday: 8am-4pm
Thursday: 8am-7pm
Friday: 8am-4pm
Select Saturday

**Introducing
Digital Thermal Imaging!
A New Way To
Diagnose Pain!**

Visit us at
www.EastbrookAnimal.com
for more information!
Call today for an appointment!
724 714-7925

**Treating: Dogs, Cats, Goats, Sheep, Rabbits,
Guinea Pigs, and other Rodents!**

**Sell Your
CAR
Fast & Easy
800-422-8884**

**WANTED STANDING
Timber:** Yoder Brothers
Logging is buying stand-
ing timber of all species,
call for free estimate; 724
253-2030 or 724 301-3167
4/24/20

CALL AHEAD!
Curb Side Service
Encouraged. Apples,
Honey, Milk, Cheese,
Donuts, Fresh Cider,
Jams, and Much,
Much More!
APPLE CASTLE
277 State Rte. 18,
New Wilmington
724 652-3221
Mon.-Sat. 7:30am-5:30pm
Our readers are the best!

**BURNING
BARRELS**

Deliver
New,
Remove Old
In Lawrence County
Call 9am-7pm • 724 846-6665

CHAIN SAW CHAIN
and wood and metal
BAND SAW BLADES
made to size.
Snyder Saw Service
724 758-6782

the GroundsGuys® Landscape/Lawn Care Services

"We know you're busy, let us do the work for you"

- String Trimming
- Lawn Mowing • Edging
- Shrub/Hedge Trimming
- Retaining Walls • Patios
- Decorative Stone • Seasonal Clean Up
- Bed Creation/Redefining/Maintenance

Mulch

724 766-6781 PA126771
www.GroundsGuys.com/ellwood-city

Hub Caps
Old and New,
Centers,
Email for Details
DLJ1029@comcast.net

**MICHAELANGELO'S
SUNDAY** Flea Market
will be open Sun., March
29. Rte. 422, 5 mi. West
of New Castle, 724 652-
6244

FORMER AMISH Roof-
ers, experienced crews,
new roofing/re-roofing
with shingles or metal;
Call Chris Byler 724 202-
9747, 216 469-0322 cell,
PA146758 3-27

ONE NATION UNDER GOD

OZINGA ROOF & GUTTER

724 301 5002

SHINGLE ROOFS • METAL ROOFS • GUTTERS • REPAIRS
PA113376 OZINGAROOFSYSTEMS.COM

**SEAL AS MANY
AS 3 LEAKS**
**REPLACE MISSING
SHINGLES (26)**
**SEAL CHIMNEY
FLASHING**
**SEAL SANITATION
PIPE**
CLEAN ALL GUTTERS

**ROOF
Tune-Up!**
\$199
**REGISTERED
BONDED
INSURED**

Hiring

LOCAL CHURCH in
need of pianist/choir di-
rector; please call 724 944-
1905 4/3

NEEDED: SOMEONE
for light housekeeping
and a little bit of yard
work, Mahoningtown
area; 724 510-9003 3-27

LOOKING FOR Home
Health Care help for my
bedridden mom with de-
mentia, covering after-
noons 4pm-9pm, \$15 per
hour, call after 4pm; 724
658-8637 3-27

TANNER'S LAWN Care
is looking for college
students home during
summer break to work
landscaping, Lawrence
County area; call 724 591-
6042 4-3

• Hiring • Hiring • Hiring •

A FAST-PACED, high
volume family dental
practice looking to add
a dedicated and compas-
sionate person who en-
joys working with people
to our front office team.
Duties will include, but
not limited to the follow-
ing: scheduling, patient
check-out and payment
collection, answering
financial questions, an-
swering and making
phone calls, insurance
benefits verification, etc.
Must have minimum of
1 year dental front office
(preferred) or medical
front office, and comput-
er experience, must be
able to multi-task; Send
resume to: Job, PO Box
5132, New Castle, PA
16105 4-3

NEW CASTLE Office
Now Open! AmeriCare
Staffing hiring for New
Castle, Butler, etc. \$11.50
+ hour, all shifts, 724
965-8695, PCW, CNA
apply online: americare
staffingclearcareonline.
com/quick-apply. Great
Benefits: 1.5 times your
hourly rate, PTO, Medi-
cal, Dental, Vision, Short
& Long Term Disability,
Sign-On Bonus \$250.00,
Life Ins. AFLAC, Legal
Shield, same day pay for
Fill-In 4-17

SEASONAL HELP
wanted: golf course mow-
ing and daily setup, 40 &
20 hour per week posi-
tions available; 724 658-
5315 or email: jgiardina@
avalonlakes.com. Avalon
Field Club at New Castle
is an Equal Opportunity
Employer 5/1

HIRING: SOMEONE
for home organization
and cleaning, must have
references, car, must
be available weekends,
leave message; 724 730-
0031 3-27

**SOCIAL SECURITY
DISABILITY**
Has your claim
been denied?
Call **Attorney
Pamela Miller**
724 656-1555
No Recovery - No Fee

**BRA-VEN
Property
Maintenance,
Lawn Care and
Handyman Services**
Locally owned and
operated, insured,
credit card accepted
724 510-5822
PA152420

• Hiring • Hiring • Hiring •

**Do You Have a Passion for Seniors
and Want to Make a Difference?**

Become a CAREGiversm

**Home
Instead[®]**
SENIOR CARE
to us, it's personal.

*By changing the lives
of people you work
with, you may even
change your own.*

- Paid Training
- A supportive office staff
- All shifts available: day, evening, overnight
- Sign-on Bonus and Performance Incentives

We Offer!

Apply Now!

HomeInstead.com/580 • 724-535-6101



VEKA
Fombell, PA | 724-452-1000

EMPLOYMENT OPPORTUNITIES!

Positions Available:

Extrusion Machine Operators
Lamination Machine Operators
Quality Assurance Inspectors

**GROWTH
POTENTIAL**

**COMPETITIVE
WAGES**

**EXCELLENT
BENEFITS**

Come Join our Family! Apply online at vekainc.com/hire

VEKA is an Equal Opportunity Employer

Medical • Janitorial • Safety • Office Wholesale Supply

Incontinence Supplies

• Attends • Covidien •

Wound Care Supplies



MEDICALSOURCE

1 800 847-2289 724 652-9060

169 Scotland Lane, New Castle • Open 7-4 Mon-Fri.

Neely Bros. Plumbing, L.L.C. New Construction and Repairs

Drains, Gas & Water
Lines, Hot Water
Tanks, Electric Drain
Cleaning, "No Job Too
Small" Great Rates
724 657-1144
PA025841

Strange But True

by Samantha Weaver

• The blue whale is the largest animal known to have ever existed. The marine mammal is so large, in fact, that a grown man could swim through its largest blood vessels. ©2020 King Features



Get Your Car Ready To GO!

REBATES
available on
BATTERIES

Tire Sale



Shuttle Service Available
www.WilsonsAutomotiveInc.com
317 Mahoning Ave., New Castle
Mon.-Fri. 8-5, Sat. 8-Noon • 724 657-8825

VISA MasterCard DISCOVER Key Programming

• A single pound of sequoia seeds contains roughly 90,000 individual seeds.

King Crossword

A&M Roofing

All Types Roofs Installed
Rubber Roofs - Gutters - Repairs
724 658-6112
Winner of "Best of the Best" Roofers
in New Castle • PA034825

DJ TONY TUNEZ

All Occasion Music

Spinning Top 40,
Country, Oldies,
R&B, Classic Rock,
Rap; 724 730-2009

• Early science-fiction author E.E. "Doc" Smith wasn't just a writer; he also was an engineer. He's the guy who figured out how to get powdered sugar to stick to doughnuts.

Used Tires

starting at... **\$15**

McCOY

TIRE & SERVICE

401 S. Mill St., New Castle 724 658-4771
Mon.-Fri. 8:00-5:30, Sat. by appt. 8:30-Noon

WE MOUNT ATV & MOTORCYCLE TIRES

Whiting Roll-Offs, Inc.

NEW SIZES AVAILABLE!

Let's Talk
Trash!

✓NO Hidden
Fees!

Call Us Now!
724 971-0447

10 Yard.....\$195
12 Yard.....\$215
15 Yard.....\$245
20 Yard.....\$310
30 Yard.....\$460
40 Yard.....\$625

Above prices are a
1 week rental.

Need another week?
ADD \$30.00
to above prices!

Call Us By Noon and We
Will See You This Afternoon!

• If you know someone who, for some reason, is overly fond of sneezing, your friend is a steruphiliac.

• The name of the state of Iowa comes from a Native American language. The original word, "ayuxba," means "sleepy ones."

BIBLE TRIVIA

by Wilson Casey

1. Is the book of Ezekiel in the Old or New Testament or neither?
 2. What famous prophet was the Son of Amoz? Paul, Isaiah, Peter, John the Baptist
 3. Who was John the Baptist's father? Uziah, Methuselah, Zechariah, Davis
 4. Who had his servants set barley crops on fire because he refused to meet with Absalom? Job, Joab, Jethro, Jehoshaphath
- ©2020 King Features
*****ANSWERS*****
1) Old; 2) Isaiah;
3) Zechariah; 4) Joab

ACROSS

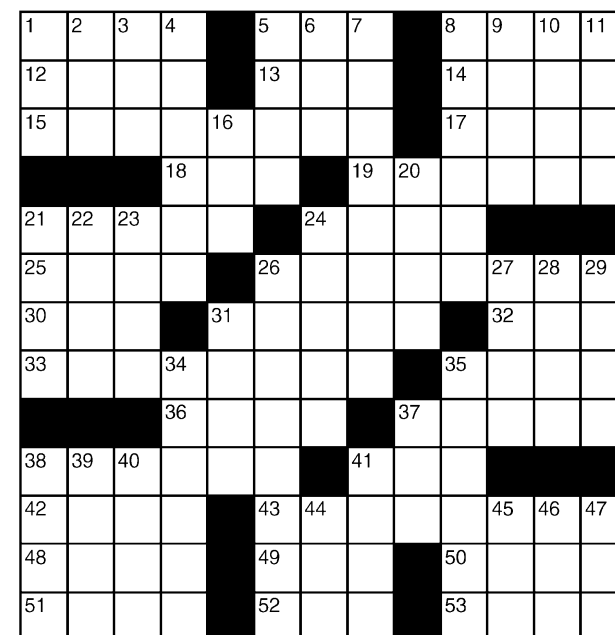
- 1 Sacred wading bird
- 5 Suitable
- 8 Morse "T"
- 12 Created
- 13 Meadow
- 14 Erstwhile Peruvian
- 15 Series of missed calls
- 17 Celebrity
- 18 Pair
- 19 Consecrate with oil
- 21 Cognizant
- 24 Huffed and puffed
- 25 Shrewd
- 26 Lunch holder
- 30 Tokyo's old name

- 31 Canonized one
- 32 Beer-like brew
- 33 Joke that won't work on radio
- 35 On the briny
- 36 Thy
- 37 Theater staffer
- 38 Treeless tract
- 41 Blond shade
- 42 Ark builder
- 43 Long-popular jazz tune
- 48 Shrek, for one
- 49 Pirouette

DOWN

- 1 Mischievous tyke
- 2 "Humbug!"
- 3 Altar affirmative
- 4 Guard
- 5 Chorus member
- 6 Shooter
- 7 Annoying follower
- 8 Drop from a will
- 9 Opposed
- 10 Read cursorily
- 11 Rodgers collaborator
- 16 Lamb's mama
- 20 Salamander
- 21 Dogfight participants
- 22 Gully
- 23 Awestruck
- 24 Pipe type
- 26 Loaf of French bread
- 27 Wild party
- 28 Sheltered
- 29 Paraphernalia

©2020 King Features Syndicate • Answers on page 10 • Completion time - 21 minutes



NEW! NEW! NEW!



Red Wing • Tingley • Irish Setter • Worx • Lacrosse • Muck Boots • Dryshod

NEAL'S HARNESS SHOP

2213 Heather Heights Rd., New Wilmington, PA 16142
(1/4 mile south of the Cheese Plant on Rte 18) Mon.-Sat. 8am-5pm

Classified Service Directory

Service and Professional • Merchants and Businesses

BOOKS

USBORNE Books & More... Open a World of Possibilities! Fund-raisers, Booths, Book Fairs, Matching Grants, and Reading Incentive Programs for Schools. Facebook Parties, too! Visit: Facebook.com/JamiesReadingRoom Email: plyler.jamie@gmail.com Shop: www.N5068.myubam.com Jamie Plyler, Educational Services Representative

CHILDREN'S GIFTS

Nana's Tuggin' Tags, Fleece or flannel mini blankets. Children's Cloth Books. Matching Baby Essentials sets: blanket, changing pad, burp cloth. For pictures, more info and ordering visit: facebook.com/aTouchofJoy .TugginTags

CHURCHES

FIRST UNITED METHODIST Church, 135 Decker Dr., New Castle; Sunday 9:30am: worship, nursery ministry, J.A.M. (Jesus And Me) for ages 3-12; 724 658-5577

NEW HOPE WESLEYAN CHURCH Pastor Gary DeWitt, 2300 Pulaski Rd., New Castle, 724 658-3019 Sunday School 9:45am, Sunday Worship 10:45am; Hour of Power Prayer 3:00pm; Wed. Programs: Youth and Children 6:15pm, Adult Study 6:30pm; Grief Share Classes, call for information

OAKPOINTE CHRISTIAN CENTER 885 Harbor-Edinburg Rd., (cut-off between 422 & 224) Edinburg. Sundays 10:30am, Wednesdays 6:30pm. Dr. Abel Robles, Senior Pastor

CHURCHES

FIRST ALLIANCE 111 Mission Meade Dr., Rte. 18 N., Nesh. Twp. Sun.: 9:30am Sunday School, 10:45am Worship; Wed.: 11:00am Prayer, 6:30pm Men's & Ladies' Bible Study, 6:30pm Youth Group; 724 654-4512 Pastor John McCready www.firstalliancecnc.org facebook@1stalliance

WAYSIDE EMMANUEL Church Sun.: Worship 10am, Thurs. Online Bible Study 7am facebook page; 724 652-6439, 4437 Mitchell Rd., New Castle, PA 16105 Pastor Bryan Warner

FELLOWSHIP IN THE WORD 1228 Rebecca St., New Castle, 16101 Sunday School 9:30am, Sun. Worship 10:30am, Mon. 6pm Youth, Thurs. 7pm Bible Study

CHURCHES

NEW CREATION CHURCH, Sunday Worship 10:30am, Pastor Chuck Jewell, Rear of First Assembly of God, 2021 Pulaski Rd., New Castle, 724 654-7952, www.new-creation-church.com

LIFE CHANGING MINISTRIES Sunday School/Bible Study 9:30am; Sunday Worship 10:30am; Thurs. Youth Group 6pm; 2929 Mercer Rd., New Castle 16105, 724 652-4090 Pastor Bill Rupert

HANDYMAN

MOST HOME REPAIRS, Senior Discounts, Free Estimates, Insured, PA112648 724 657-4567

NOTICE: The Weekly Bargain Bulletin office is closed to walk-ins. We are not accepting personal for sale items until the social distancing protocols have been lifted by governor Tom Wolf. Call 724 654-5529 to place your prepaid business ads.

HAULING

GENERAL HAULING We Haul Trash, Clean Cellars, Attics, Garages. Haul Brush, Topsoil, Limestone, Coal & Buy Scrap; Jesus Loves You 724 658-0329

PRACTICAL NURSING

LENAPE Practical Nursing at Lawrence Become a nurse in one year! Scheduling for March & Oct.; Info call 724 658-3583 ext. 7112 LCCTC, 750 Phelps Way, New Castle

Classified Service Directory: 8 lines, approx. 18-22 words, \$6.25/wk., 13 wk. min. (\$81.25 total) no changes, no art, extra line + .80¢ each; deadline 5pm Tues. 724 654-5529

CALL AHEAD! Curb Side Service Encouraged. Apples, Honey, Milk, Cheese, Donuts, Fresh Cider, Jams, and Much, Much More! **APPLE CASTLE** 277 State Rte. 18, New Wilmington 724 652-3221 Mon.-Sat. 7:30am-5:30pm

WILL HAUL away free: unwanted batteries, water tanks, stoves, mowers, car parts, anything made of metal, we recycle; 724 658-3395

MIKE'S HYDRAULIC Service can repair log splitter cylinders, hydraulic cylinders and sharpen chainsaw chains; 4623 Perry Hwy. (Rte. 19), Volant, PA; 724 530-7396 4/24

CROSSWELL CANVAS: Need a boat cover? Custom tarps for all your canvas needs, 25 years experience; call Jerry 724 475-3779 12-25

GREENVILLE TOOL Co.: We sell new and used American made hand tools, Mon.-Wed. 9:30am-5pm, Thurs.-Fri. 10am-6pm, Sat. 10am-4pm; 171 Main St., Greenville 724 588-8665 4/17

Free Star with Every Building

- 28'x35'x10'
- 1 Man Door
- 40 Year Siding & Roofing
- 3 9'x8' Doors
- 12" Overhang, All 4 sides
- Concrete Floor
- Other Sizes Available



Coblentz Builders

724 699-3315
Call before you build.

DO YOU WANT TO QUIT DRINKING?

WE CAN HELP.

For meeting information or to talk to someone call/text **ALCOHOLICS ANONYMOUS** 724 923-0236



J. NESBIT HAULING 422 Landscape Supply, LLC

- Top Soil • Limestone • Gravel
 - Fill Dirt • Slag • Sand • Mulch
 - Landscape Stone • Polywood Furniture
- Pickup & Delivery • 724 658-4829
3298 US Rte. 422, New Castle, PA • Member BBB
Mon.-Fri. 8am-5pm, Sat. 8am-4pm

Wanted: Paying Cash for Unwanted Junk Vehicles **Buying:** Catalytic Convertors, Batteries & Aluminum Wheels 724 752-3320

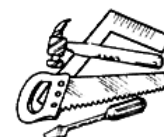
- WANTED - TRAINS: all scales, Lionel, MTH, Standard Gauge, HO, American Flyer. **Also Buying COLLECTIONS.** Will beat anybody's price; 724 667-1342

J. Brandt Tree Service, LLC PA127530
WE SPECIALIZE IN Tree Removal & Trimming

We Also Do: Shrubs • Bushes • Storm Cleanup Have Chipper • Fully Insured
Call anytime for **Free Estimates** 724 651-3255 or 724 971-6218

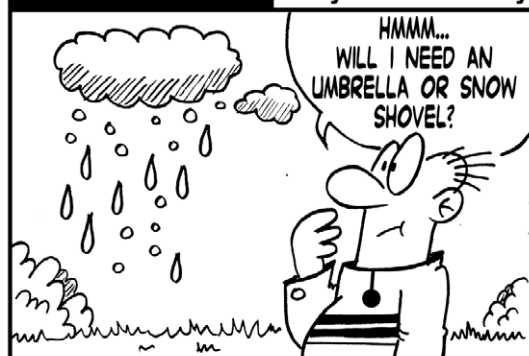
Randy's Roofing and Remodeling

- Free Estimates
 - Fully Insured
 - PA#125718
- 724 914-1859



DOUBLE TAKE

By Mark Szorady



FIND AT LEAST SIX DIFFERENCES BETWEEN CARTOONS!



ANSWERS: 1. CLOUD MOVED 2. SHIRT STRIPES DIFFERENT 3. MOUTH DIFFERENT 4. SHIRT COLLAR ADDED 5. BUSH MISSING 6. WORD BALLOON DIFFERENT
©2020 Mark Szorady. Distributed by georgetoon.com

Now Stocking KREG pocket hole jigs and accessories! Plus we do saw and tool sharpening; **Snyder Saw Service** 724 758-6782

Quality is Our Goal 20 Years Experience

Quality Woodworking

- Custom Finishing
- Custom Millwork
- Doors & Moldings
- Kitchen & Bathroom Cabinets

Adrian Yoder
313 Smith Road,
Sandy Lake, PA 16145

Phone: 724 893-6044
Fax: 814 425-0976

Got Potholes?

Screened asphalt millings for sale



Call Matt
724-944-8075

Landscaping

Complete Landscaping and Design

Specializing in **New Yards and Yard Repair**



- Low Maintenance Plants
- Retaining Walls
- Driveways
- Patios



Excavating and Ditch Witch

Specializing in **Small & Large Excavation Small Drainage Problems**



- Footers: Water, Gas, and Sewer
- Demolition
- Driveways

Residential • Commercial • PA033956
Fully Insured • **724 674-8205** • Reasonable Prices

The Leader in Truck Caps & Accessories

TOPCAP

TRUCK Accessories



738 Colt Road, Transfer Pa. 16154
www.topcap.us | info@topcap.us
Store Hours: Monday - Friday 9-5 Saturday 9-1

LIKE US ON  **facebook** **724.646.0210**

BUMPER TO BUMPER ACCESSORIES!!!
RUNNING BOARDS • HITCHES • LINERS • TONNEAUS
BUG GUARDS • CHROME TRIM AND MUCH MORE!

• To halve a lot of cherry tomatoes, try sandwiching them between two plastic lids. Press down lightly and slice through the opening to make short work of them.

Retired Teacher PAINTS

- Interior/Exterior
 - 30+ Years Exp. neat, reasonable, dependable;
- 724 667-8048**
Frank PA087536

Weekly Sudoku
by Linda Thistle

	3			8				5
1			7	2			8	
8		4			9	7		
5					8	3		
		2		7			9	8
	7		6			1		
	4			3			6	
		3	2			5		
9	6				4			7

The Garage Door Experts



Residential Commercial
r.w. Cox
Garage Doors
Service Repairs
PA002540
724 658-7316 724 342-3667

Anderal Tax

Expertise... Friendly & Affordable

Personal Returns \$139
Federal & State

- CPA On Staff
- Personal Returns
- Business Returns
- Business Bookkeeping

No Fine Print Guarantee!

129 S. Market St., New Wilmington, PA
724 301-2088

Open Mon.-Fri. 9-5; Sat. 9-12noon
later hours available by appointment

"I have never considered a difference of opinion in politics, in religion, in philosophy, as a cause for withdrawing from a friendship." Thomas Jefferson, 3rd President of the U.S.A.

New Allergy Practice in New Castle



Welcoming New Patients!
724-588-7531
Call Today to Schedule

Francisco J. Cano, MD
Board Certified Asthma, Allergy and Immunology Specialist

Laszlo Plumbing and Heating

Propane Refills Available



YORK
It's time to get comfortable.
Installation & Service

Call Today!
724 758-5610
168 Portersville Rd.
Ellport, PA
Free Estimates

Best Stump Grinding

Accepting Credit Cards
724 312-2672
PA100062

catnapper LIFT CHAIRS

Power-Lift Recliners

- Full Layout Comfort
- Steel Seat Box



Starting at \$599
3 Year Motor Warranty

ALLSHOUSE

Appliances and More

3457 Wilmington Road, New Castle
724 654-4334 allshouseappliance.com

FREE Delivery and Removal

JEWELRY REPAIRS

Diamonds Remounted
Chain Soldering

Repairs done on-site
30 years experience

Gold Mind Jewelers

IN STORE RING SIZING



122 E. State St., Sharon, PA
724 342-5411
Diamond and Gemstone Replacement

SUDOKU: Place a number in the empty boxes in such a way that each row across, each column down and each small 9-box square contains all of the numbers from one to nine. ©King Features.

Roofing

Get a Better Price!
We do all kinds, 30 years experience;
724 658-6112 Lou
PA034825

FREE Tire Repair! We will plug your leaking tire for FREE!

Ray's TIRE Shop

41 Portersville Rd., Ellwood City
814 860-0194
Mon.-Sat. 9am-5pm; Sun. closed

We Now Have New Tires in Stock
All Major Brands Available

Like New-Used Tires at Incredibly Low Prices.
Mounting, Balancing, and Tire Disposal available

